

(2016.07 NEW)Exam Collection 70-247 Dumps and 70-247 New Questions - Braindump2go.com(NQ31-NQ40)

2016 July Microsoft Official: New 70-247 Exam Questions Added Already! Download: 1.|2016 Latest 70-247 PDF and 70-247 VCE Dumps 243q from Braindump2go.com:<http://www.braindump2go.com/70-247.html> 100% 70-247 Exam Pass Guaranteed!

2.|2016 New 70-247 Exam Questions and Answers - Google

Drive:https://drive.google.com/folderview?id=0B9YP8B9sF_gNcWFQTGRSRzJRYTg&usp=sharing NEW QUESTION 31 - NEW QUESTION 40 QUESTION 31 Your company has a private cloud that is managed by a System Center Service Manager 2010 Service Pack 1 (SP1) infrastructure. The infrastructure contains four servers as shown in the following table. You upgrade MGT1 and DATA1 to Service Manager 2012. You need to ensure that DATA1 can continue to Server name Server role deploy reports to SSRS1. Which two tasks should you perform? (Each correct answer presents part of the solution. Choose two.) A. Modify the RSReportServer.config file on SSRS1. B. Modify the RSSrvPolicy.config file on SQL 1. C. Copy the Microsoft.EnterpriseManagement.Reporting.Code.dll file to SSRS1. D. Modify the RSReportServer.config file on MGT1. E. Copy the Microsoft.EnterpriseManagement.Reporting.Code.dll file to SQL 1. F. Modify the RSSrvPolicy.config file on DATA1.

Answer: ACE Explanation: <http://technet.microsoft.com/en-us/library/hh519664> QUESTION 32 Your network contains an Active Directory domain named contoso.com. You plan to install System Center 2012 Virtual Machine Manager (VMM) on server named Server1. During the installation, you receive the error message shown in the exhibit. You need to install VMM 2012 on Server1. What should you instruct a domain administrator to do first? A. Create a service location (SRV) record named _tcp.server1.dkm.contoso.com and a host (A) record named DKM. B. Create a service connection point (SCP) object named DKM.TCP.contoso.com, and then modify the permissions of the SCP object. C. Create a container named DKM, and then modify the permissions of the container. D. Create a security group named DKM, and then modify the permissions of the group. Answer: CE

Explanation: <http://blogs.technet.com/b/scvmm/archive/2012/06/18/kb-system-center-2012-virtual-machine-manager-setup-fails-to-create-child-objects-for-dkm.aspx> <http://www.aidanfinn.com/?p=11446> QUESTION 33 You deploy a System Center 2012 Service Manager infrastructure. You plan to update the scheduled backups to include Service Manager information. You need to identify which databases must be added to the scheduled backups. Which two databases should you identify? (Each correct answer presents part of the solution. Choose two.) A. DWDDataMart B. DWStagingAndConfig C. DWRepository D. ServiceManager E. OMDWDDataMart F. DWASDataBase Answer: BDE

Explanation: The ServiceManager database is sometimes referred to as the CMDB. It is the central store of all configuration items and work items managed by Service Manager. It also stores all the customizations and configuration for the Service Manager product itself. DWStagingAndConfig stores the configuration for the data warehouse and is used as a temporary place to stage the data as it moves from the ServiceManager database into the other parts of the data warehouse (DWRepository and DWDDataMart) <http://technet.microsoft.com/en-us/library/hh519598.aspx> <http://social.technet.microsoft.com/Forums/en-US/systemcenterservicemanager/thread/5cfda2d9-0bca-43b4-a57f-653d638e78e3/>

QUESTION 34 You plan to deploy System Center 2012 Virtual Machine Manager. The planned deployment must support the bare-metal deployment method. You need to identify the roles required for the planned deployment. What roles should you identify? (Each correct answer presents part of the solution. Choose two.) A. Windows Deployment Services and DHCP Server B. Windows Deployment Services and Network Policy and Access Services C. Active Directory Domain Services and Active Directory Lightweight Directory Services D. Active Directory Certificate Services and Active Directory Rights Management Services E. Active Directory Domain Services and Domain Name Services (DNS) Answer: AE

Explanation: technet.microsoft.com/library/gg610634.aspx

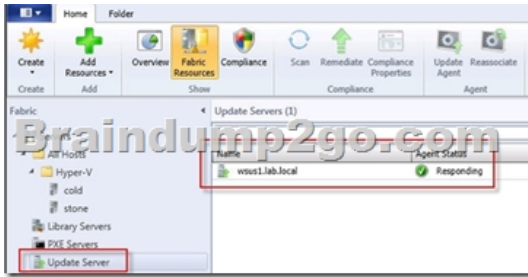
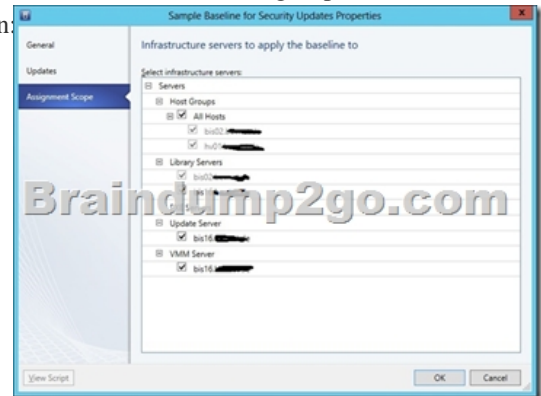
<http://blogs.technet.com/b/cloudytom/archive/2012/01/02/scvmm-2012-bare-metal-deployment-checklist.aspx> QUESTION 35 Your network contains an Active Directory domain named contoso.com. The domain contains a server named Server1 that runs Windows Server 2008 Service Pack 2 (SP 2). Server1 has System Center Virtual Machine Manager (VMM) 2008 R2 Service Pack 2 (SP2) installed. The VMM database is stored locally by using Microsoft SQL Server 2005 Express Edition. You need to upgrade Server1 to VMM 2012. The solution must minimize costs. What should you do before you upgrade Server1? (Each correct answer presents part of the solution. Choose two.) A. From Server1, run the uninstall program for VMM 2008 R2 and specify the remove data option. B.

Upgrade Server1 to Windows Server 2008 R2 Service Pack 1 (SP1). C. Remove the computer account of Server1 from the domain. D. On Server1, install SQL Server 2008 Express. E. Move the VMM database to a server that has SQL Server 2008 R2 Enterprise Edition installed. Answer: AE

Explanation: E (not D): SQL Server minimum requirement: SQL Server 2008 R2 or SQL Server 2008 R2 Incorrect: Not D: Windows server minimum requirement: Windows Server 2008 R2

<http://technet.microsoft.com/en-us/library/hh430992> QUESTION 36 You have a System Center 2012 Virtual Machine Manager

(VMM) infrastructure that contains 20 Hyper-V hosts. You configure VMM to use a Windows Server Update Services (WSUS) server named WSUS1 as an update server. You open the VMM Administrator Console as shown in the exhibit. (Click the Exhibit button.) You need to identify which hosts comply with the Sample Baseline for Security Updates. What should you do? A. Modify the properties of the baseline. B. Modify the properties of the All hosts group. C. Select the All hosts group from the fabric navigation pane. D. Modify the properties of WSUS1. Answer: A Explanation:



QUESTION 37 Your company has a private cloud managed by a System Center 2012 Virtual Machine Manager (VMM) infrastructure. The server fabric contains three servers named Host1, Host2, and Host3. The servers are configured as shown on the following table.

Server name	Server role	Host group	Connection
Host1	Hyper-V host	HG1	Fibre Channel
Host2	VMM library	HG2	iSCSI
Host3	Hyper-V host	HG3	Fibre Channel

The networking fabric contains a SAN named STORAGE1. STORAGE1 supports cloning. You create a SAN copy-capable template named Template1 for a new virtual machine. Template1 uses a VHD stored on Host2. You need to ensure that Template1 can be used to provision virtual machines on Host1 and Host3. The solution must use the minimum amount of administrative effort and must use SAN cloning. What should you do? (Each correct answer presents part of the solution. Choose two.) A. Move Template1 to Host1. B. Move Template1 to Host3. C. Add Host1 to HG2. D. Configure Host2 to use Fibre Channel connection. E. Configure Host3 to use an iSCSI connection. F. Add Host3 to HG1. Answer: A, E Explanation: Put the template on the Library server (host 1). Add the second host (host3) to the Host group on the library server (host1).

<http://technet.microsoft.com/en-us/library/gg610594.aspx> QUESTION 38 Your network contains a domain named contoso.com. The domain contains five virtualization servers. The servers are configured as shown in the following table.

Server name	Server
Host1	Windows Server 2008 (SP2)
Host2	Hyper-V server role
Host3	Microsoft Virtual Server 2005 R2
Host4	VMware ESX Server 2.5
Host5	VMware ESX Server 3.5

The network also contains a server named Server6 that runs VMware vCenter Server. In the domain, you install System Center 2012 Virtual Machine Manager (VMM) on a server named Server7. You configure Server7 to manage Server6. You need to ensure that you can add all of the servers to the VMM fabric. Which two actions should you perform? (Each correct answer presents part of the solution. Choose two.) A. Upgrade Server1 to Hyper-V Server 2008 R2 Service Pack 1 (SP1). B. Upgrade Server2 to Hyper-V Server 2008 R2 Service Pack 1 (SP1). C. Install Hyper-V Server 2008 R2 Service Pack 1 (SP1) on Server3. D. Install

Hyper-V Server 2008 R2 Service Pack 1 (SP1) on Server4.E. Install Hyper-V Server 2008 R2 Service Pack 1 (SP1) on Server5.
Answer: CDEExplanation:D (not E): VMM 2012 SP1 can manage Hyper-V hosts and clusters, as well as VMware ESX/ESXi 3.5 and 4.1, vCenter Server 4.1 (support for vSphere 5 is coming) and now also Citrix XenServer 6.0.

<http://technet.microsoft.com/en-us/library/gg610649><http://technet.microsoft.com/en-us/library/hh430991> QUESTION 39Your network contains an Active Directory forest named bluyonderairlines.com. The forest contains a System Center 2012 Operations Manager infrastructure.Your company, named Blue Yonder Airlines, has a partner company named Alpine Ski House. The Alpine Ski House network contains an Active Directory forest named alpineskihouse.com. Alpineskihouse.com does not have any trusts. A firewall exists between the Alpine Ski House network and the Blue Yonder Airlines network.You configure conditional forwarding on all of the DNS servers to resolve names across the forests. You plan to configure Operations Manager to monitor client computers in both of the forests. You need to recommend changes to the infrastructure to monitor the client computers in both of the forests. What should you include in the recommendation? (Each correct answer presents part of the solution. Choose two.) A. Allow TCP port 5986 on the firewall.B. Create a DNS zone replica of biueyonderairlines.com.C. Create a DNS zone replica of alpineskihouse.com.D. Deploy a gateway server to alpineskihouse.com.E. Allow TCP port 5723 on the firewall.F. Deploy a gateway server to blueyonderairlines.com. Answer: DEExplanation:E: Gateway, System Center Management service, 5723/TCPD: if there is a firewall between the agents and management servers, multiple authorized endpoints must be defined and maintained in the firewall rules to allow communication between them.To reduce this administrative overhead, Operations Manager has a server role called the gateway server. Gateway servers are located within the trust boundary of the agents and can participate in the mandatory mutual authentication. Because they lie within the same trust boundary as the agents, the Kerberos V5 protocol for Active Directory is used between the agents and the gateway server. Each agent then communicates only with the gateway servers that it is aware of. The gateway servers communicate with the management servers.

<http://technet.microsoft.com/en-us/library/hh212823.aspx><http://technet.microsoft.com/en-us/library/hh298610.aspx> QUESTION 40 You have a System Center Service Manager 2010 Service Pack 1 (SP1) infrastructure that contains multiple servers.The infrastructure contains the following:- Multiple class workflows- Custom Microsoft SQL Server Reporting Services reports- Custom views of the System Center Service Manager Console- Custom webpages on the Service Manager IT Analyst Self-Service Portal You plan to upgrade to Service Manager 2012.You need to identify which task must be performed after the planned upgrade.What should you identify? A. Recreate the custom workflows.B. Recreate the custom webpages.C. Recreate the custom reports.D. Recreate the custom views. Answer: BExplanation:<http://technet.microsoft.com/en-us/library/hh524327> !!! Recommend !!! 1.2016 Braindump2go Valid 70-247 Exam Dumps with PDF and VCE 243Q Instant Download:<http://www.braindump2go.com/70-247.html> [100% Exam Pass Promised!] 2.More Braindump2go 70-247 Exam Questions PDF - Google Drive: <https://drive.google.com/folderview?id=0B75b5xYLjSSNfnBpN04tdU9maXlvTDZkUEQ0StHLWUtmEXR2eTdBQk9hWINjVmdNVjBXXZ28&usp=sharing>