

Official 2014 Latest Microsoft 70-412 Exam Dump Free Download(81-90)!

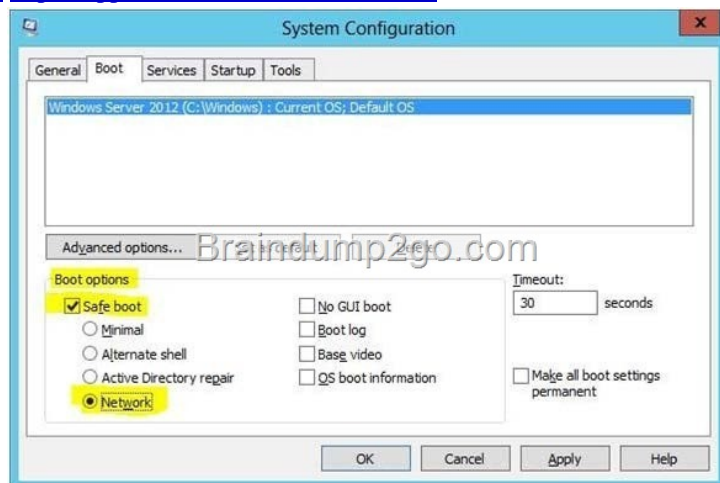
QUESTION 81 Your network contains an Active Directory domain named contoso.com. A previous administrator implemented a Proof of Concept installation of Active Directory Rights Management Services (AD RMS). After the proof of concept was complete, the Active Directory Rights Management Services server role was removed. You attempt to deploy AD RMS. During the configuration of AD RMS, you receive an error message indicating that an existing AD RMS Service Connection Point (SCP) was found. You need to remove the existing AD RMS SCP. Which tool should you use? A. Authorization Manager B. TPM Management C. Active Directory Sites and Services D. Services Answer: C QUESTION 82 Your network contains an Active Directory domain named contoso.com. The domain contains a main office and a branch office. An Active Directory site exists for each office. All domain controllers run Windows Server 2012 R2. The domain contains two domain controllers. The domain controllers are configured as shown in the following table.

Site	Domain controller name	Configuration
Main	DC1	Writable domain controller Global catalog server DNS server
Branch	DC2	Read-only domain controller (RODC) Global catalog server

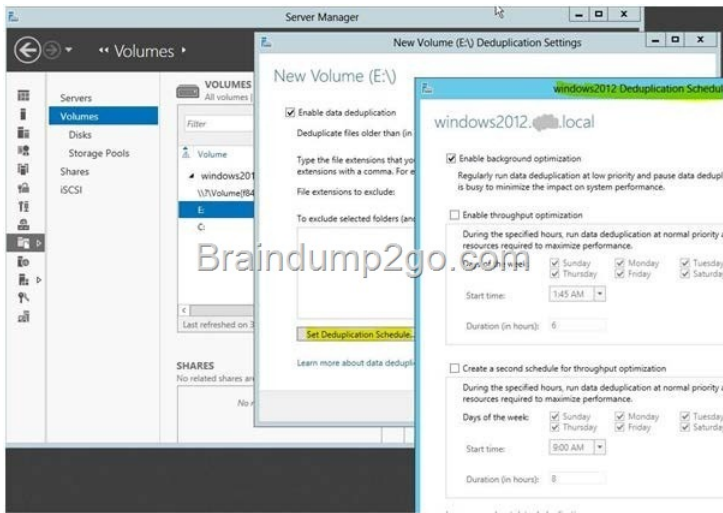
DC1 hosts an Active Directory-integrated zone for contoso.com. You add the DNS Server server role to DC2. You discover that the contoso.com DNS zone fails to replicate to DC2. You verify that the domain, schema, and configuration naming contexts replicate from DC1 to DC2. You need to ensure that DC2 replicates the contoso.com zone by using Active Directory replication. Which tool should you use? A. Ntdsutil B. Repadmin C. Dnslint D. Active Directory Domains and Trusts Answer: B Explanation: If you see question about AD Replication, First preference is AD sites and services, then Repadmin and then DNSLINT. QUESTION 83 You have a server named Server1 that runs Windows Server 2012 R2. Windows Server 2012 R2 is installed on volume C. You need to ensure that Safe Mode with Networking loads the next time Server1 restarts. Which tool should you use? A. The Msconfig command B. The Restart-Server cmdlet C. The Restart-Computer cmdlet D. The Bootcfg command Answer: A Explanation: A. Use system config to configure boot options B. Not a valid cmdlet C. Restarts ("reboots") the operating system on local and remote computers. No boot options D. modifies the Boot.ini file no option for safe mode/networking for win8/2012

<http://technet.microsoft.com/en-us/library/hh849837.aspx> <http://support.microsoft.com/kb/317521>

<http://technet.microsoft.com/en-us/library/cc725967.aspx>



QUESTION 84 You have a file server named FS1 that runs Windows Server 8. Data Deduplication is enabled on FS1. You need to configure Data Deduplication to run at a normal priority from 20:00 to 06:00 daily. What should you configure? A. File and Storage Services in Server Manager B. The Data Deduplication process in Task Manager C. Disk Management in Computer Management D. The properties of drive C Answer: A Explanation: A. In Windows Server 2012 R2, deduplication can be enabled locally or remotely by using Windows PowerShell or Server Manager. <http://technet.microsoft.com/en-us/library/hh831700.aspx>



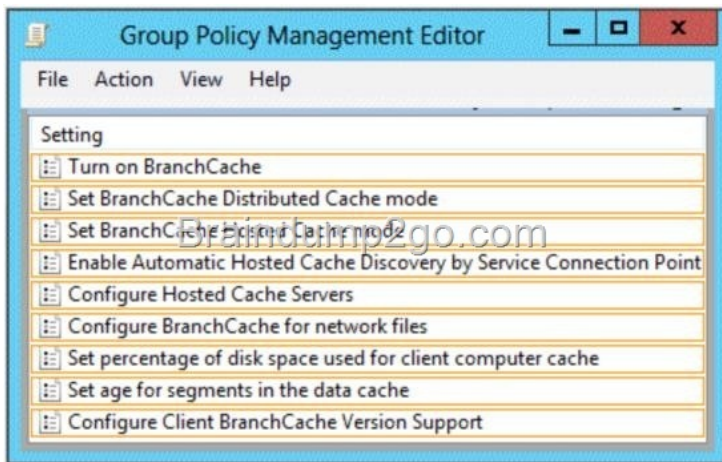
QUESTION 85 Your network contains an Active Directory domain named contoso.com. All client computers run Windows 8 Enterprise. You have a remote site that only contains client computers. All of the client computer accounts are located in an organizational unit (OU) named Remote1. A Group Policy object (GPO) named GPO1 is linked to the Remote1 OU. You need to configure BranchCache for the remote site. Which two settings should you configure in GPO1? To answer, select the two appropriate settings in the answer area.

Setting	State
Turn on BranchCache	Not configured
Set BranchCache Distributed Cache mode	Not configured
Set BranchCache Hosted Cache mode	Not configured
Enable Automatic Hosted Cache Discovery by Service Connection Point	Not configured
Configure Hosted Cache Servers	Not configured
Configure BranchCache for network files	Not configured
Set percentage of disk space used for client computer cache	Not configured
Set age for segments in the data cache	Not configured
Configure Client BranchCache Version Support	Not configured

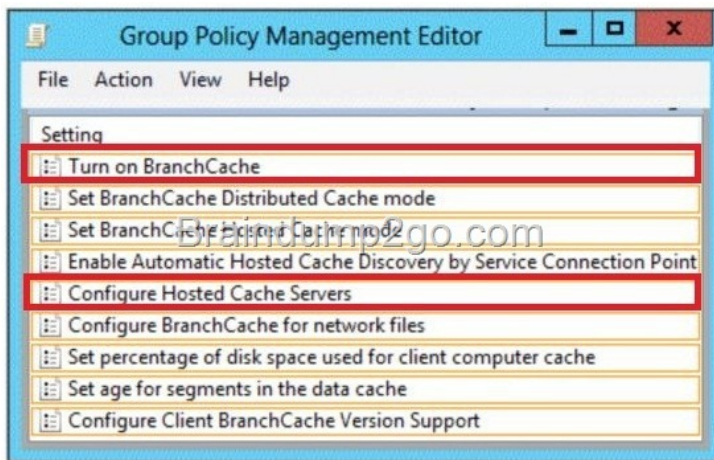
Answer:

Setting	State
Turn on BranchCache	Not configured
Set BranchCache Distributed Cache mode	Not configured
Set BranchCache Hosted Cache mode	Not configured
Enable Automatic Hosted Cache Discovery by Service Connection Point	Not configured
Configure Hosted Cache Servers	Not configured
Configure BranchCache for network files	Not configured
Set percentage of disk space used for client computer cache	Not configured
Set age for segments in the data cache	Not configured
Configure Client BranchCache Version Support	Not configured

QUESTION 86 Your company has a main office and a branch office. An Active Directory site exists for each office. The network contains an Active Directory forest named contoso.com. The contoso.com domain contains three member servers named Server1, Server2, and Server3. All servers run Windows Server 2012 R2. In the main office, you configure Server1 as a file server that uses BranchCache. In the branch office, you configure Server2 and Server3 as BranchCache hosted cache servers. You are creating a Group Policy for the branch office site. In the branch office, you need to configure the client computers that run Windows B to use Server2 and Server3 as BranchCache.



Answer:



QUESTION 87 Your network contains two Active Directory forests named contoso.com and fabrikam.com. A two-way forest trust exists between the forests. The contoso.com forest contains an enterprise certification authority (CA) named CA1. You implement cross-forest certificate enrollment between the contoso.com forest and the fabrikam.com forest. On CA1, you create a new certificate template named Template1. You need to ensure that users in the fabrikam.com forest can request certificates that are based on Template1. Which tool should you use? A. Sync-ADObject B. Pkiview.msc C. CertificateServices.ps1 D. Certutil E. PKISync.ps1 Answer: E Explanation: A. Replicates a single object between any two domain controllers that have partitions in common. B. Monitoring and troubleshooting the health of all certification authorities (CAs) in a public key infrastructure (PKI) are essential administrative tasks facilitated by the Enterprise PKI snap-in. D. use Certutil.exe to dump and display certification authority (CA) configuration information, configure Certificate Services, backup and restore CA components, and verify certificates, key pairs, and certificate chains. E. PKISync.ps1 copies objects in the source forest to the target forest

<http://technet.microsoft.com/en-us/library/hh852296.aspx> [http://technet.microsoft.com/en-us/library/cc732261\(v=ws.10\).aspx](http://technet.microsoft.com/en-us/library/cc732261(v=ws.10).aspx) [http://technet.microsoft.com/en-us/library/ff955845\(v=ws.10\).aspx](http://technet.microsoft.com/en-us/library/ff955845(v=ws.10).aspx)

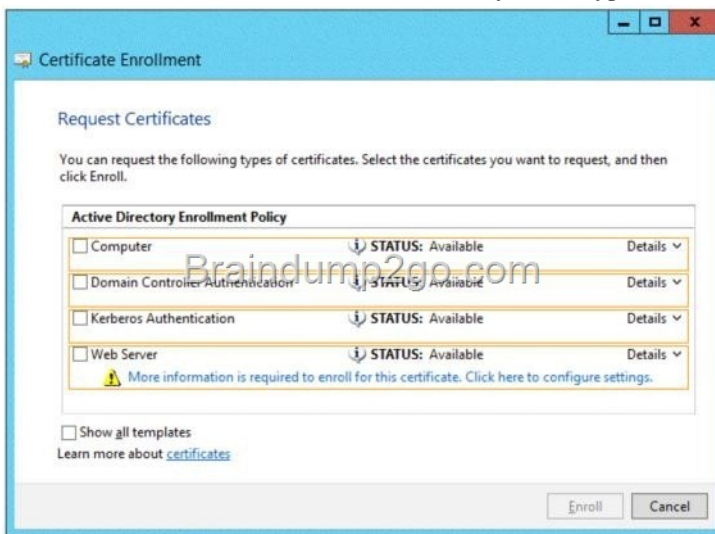
• To copy certificate templates from an account forest to the resource forest

1. Start Windows PowerShell. Change the current directory to the location of the PKISync.ps1 script.
2. Copy the certificate template from the account forest by using the command `.PKISync.ps1 -sourceforest <account forest DNS> -targetforest <resource forest DNS> -type Template -cn <certificate template common name>`.
3. Copy the OID container from the account forest by using the command `.PKISync.ps1 -sourceforest <account forest DNS> -targetforest <resource forest DNS> -type Oid -f and press ENTER.`

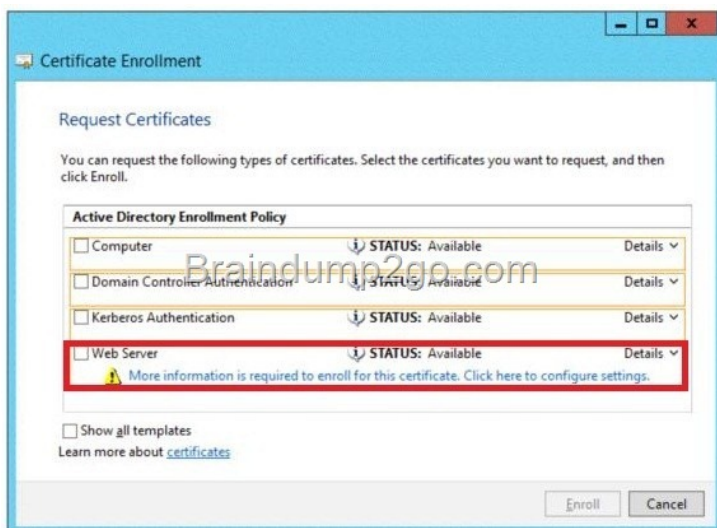
Note
If a certificate template in the resource forest has the same name as the certificate template you want to copy from the account forest, you must rename the certificate template in the account forest before copying the template to the resource forest. See Rename a Certificate Template.

"Configure Hosted Cache Servers" is a new Group Policy setting that you can also use when deploying BranchCache in hosted cache mode. With this setting, you can enter the computer names of the hosted cache servers that are available to client computers in the branch office. If you use this setting, client computers don't need to search for hosted cache servers because they already have the server names.

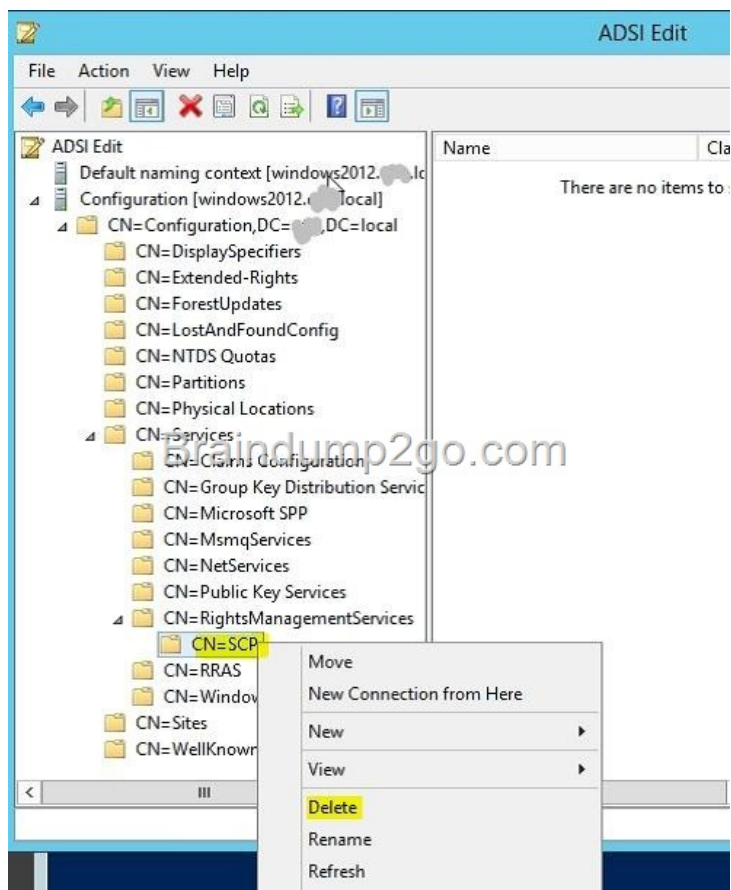
QUESTION 88 Your network contains an Active Directory domain named contoso.com. The domain contains an enterprise certification authority (CA). The domain contains a server named Server1 that runs Windows Server 2012 R2. You install the Active Directory Federation Services server role on Server1. You plan to configure Server1 as an Active Directory Federation Services (AD FS) server. The Federation Service name will be set to adfs1.contoso.com. You need to identify which type of certificate template you must use to request a certificate for AD FS.



Answer:



QUESTION 89 Your network contains an Active Directory domain named contoso.com. A previous administrator implemented a Proof of Concept installation of Active Directory Rights Management Services (AD RMS). After the proof of concept was complete, the Active Directory Rights Management Services server role was removed. You attempt to deploy AD RMS. During the configuration of AD RMS, you receive an error message indicating that an existing AD RMS Service Connection Point (SCP) was found. You need to remove the existing AD RMS SCP. A. Certification Authority B. Authorization Manager C. ADSI Edit D. Active Directory Domains and Trusts Answer: C



QUESTION 90 Your network contains an Active Directory domain named contoso.com. The domain contains a server named Server1 that runs Windows Server 2012 R2. Server1 has the Active Directory Certificate Services server role installed and is configured as an enterprise certification authority (CA). You need to ensure that all of the users in the domain are issued a certificate that can be used for the following purposes: - Email security - Client authentication - Encrypting File System (EFS) Which two actions should you perform? (Each correct answer presents part of the solution. Choose two.)

A. From a Group Policy, configure the Certificate Services Client - Auto-Enrollment settings.
 B. From a Group Policy, configure the Certificate Services Client - Certificate Enrollment Policy settings.
 C. Modify the properties of the User certificate template, and then publish the template.
 D. Duplicate the User certificate template, and then publish the template.
 E. From a Group Policy, configure the Automatic Certificate Request Settings settings.

Answer: AD Explanation: The default user template supports all of the requirements EXCEPT auto enroll as shown below:

Permissions for Authenticated Users	Allow	Deny
Full Control	<input type="checkbox"/>	<input type="checkbox"/>
Read	<input checked="" type="checkbox"/>	<input type="checkbox"/>
Write	<input type="checkbox"/>	<input type="checkbox"/>
Enroll	<input type="checkbox"/>	<input type="checkbox"/>

For special permissions or advanced settings, click .

However a duplicated template from users has the ability to autoenroll:

Permissions for Authenticated Users	Allow	Deny
Full Control	<input type="checkbox"/>	<input type="checkbox"/>
Read	<input checked="" type="checkbox"/>	<input type="checkbox"/>
Write	<input type="checkbox"/>	<input type="checkbox"/>
Enroll	<input type="checkbox"/>	<input type="checkbox"/>
Autoenroll	<input checked="" type="checkbox"/>	<input type="checkbox"/>

The Automatic Certificate Request Settings GPO setting is only available to Computer, not user.

<http://technet.microsoft.com/en-us/library/dd851772.aspx> Passing Microsoft 70-412 Exam successfully in a short time! Just using Braindump2go's Latest Microsoft 70-411 Dump: <http://www.braindump2go.com/70-412.html>